

# Cheat Sheet



## Southeast Asia: People and Places

Learn about the people and places in Southeast Asia at a glance, and find out how to search for related information quickly and smartly!



Location



Countries and  
Capital Cities



Oceans and  
Seas



Weather and  
Climate



Natural  
Landscapes



People and  
Lifestyles



Cooperation  
in the region





# Location

Southeast Asia, as the name suggests, lies in the south-eastern part of the Asia continent.

It is located to the south of China, and east of India.

Consisting of two main portions, the mainland part includes Myanmar, Thailand, Laos, Cambodia and Vietnam while the islands portion includes Malaysia, Singapore, Indonesia, Brunei and the Philippines.



Image Source: The World Factbook, Central Intelligence Agency (2014)

# Countries and Capital Cities



Here's a quick view at some countries that are in Southeast Asia, as well as their corresponding capital cities:



Country	Capital City
Brunei	Bandar Seri Begawan
Cambodia	Phnom Penh
Indonesia	Jakarta
Laos	Vientiane
Malaysia	Kuala Lumpur
Myanmar	Naypyidaw
Philippines	Manila
Singapore	Singapore
Thailand	Bangkok
Vietnam	Hanoi



# Oceans and Seas

The major oceans and seas that surround the region include:

Oceans	Seas
<ul style="list-style-type: none"> <li>Indian Ocean</li> <li>Pacific Ocean</li> </ul>	<ul style="list-style-type: none"> <li>South China Sea</li> <li>Philippines Sea</li> <li>Gulf of Thailand</li> <li>Java Sea</li> <li>Celebes Sea</li> </ul>



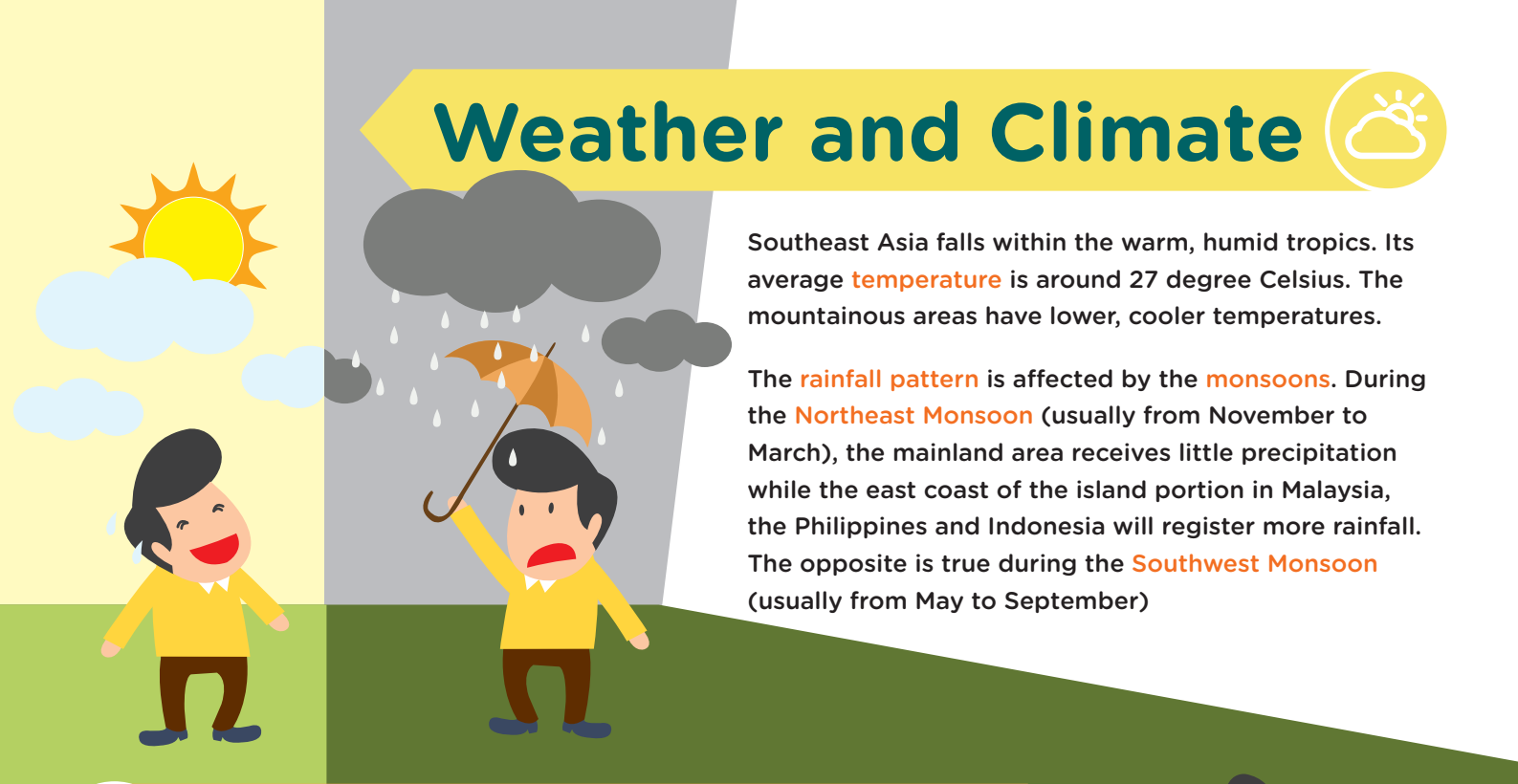
The Strait of Malacca (waterway connecting Andaman Sea in Indian Ocean to South China Sea in Pacific Ocean) is an important sea trade route linking Asia Pacific and the rest of the world.

# Weather and Climate



Southeast Asia falls within the warm, humid tropics. Its average **temperature** is around 27 degree Celsius. The mountainous areas have lower, cooler temperatures.

The **rainfall pattern** is affected by the **monsoons**. During the **Northeast Monsoon** (usually from November to March), the mainland area receives little precipitation while the east coast of the island portion in Malaysia, the Philippines and Indonesia will register more rainfall. The opposite is true during the **Southwest Monsoon** (usually from May to September)



## Natural Landscapes

The rainforests in Southeast Asia are renowned for their rich biodiversity. Various well-known natural features are scattered throughout the region:

**Mountains:** Hkakabo Razi, Mount Kinabalu

**Rivers:** Tonle Sap, Irrawaddy River, Mekong River, Chao Phraya

**Volcanoes:** Mount Merapi, Mount Bromo

*Do you know where all these features are located at? Use the Search Tips at the end of this cheatsheet to find out more using specific keywords.*



## People and Lifestyles



The **ethnic compositions** and **languages** spoken in Southeast Asia are diverse. Languages spoken include Burmese and Thai in Myanmar and Thailand, Khmer in Cambodia, Vietnamese in Vietnam, Tagalog in the Philippines, and Malay and Bahasa Indonesia in Malaysia and Indonesia respectively.

**Settlements** usually cluster around fertile river and delta areas. Though largely rural, urbanisation is ongoing and cities such as Bangkok, Manila and Jakarta are highly populated.



# Cooperation in the region



The Association of Southeast Asian Nations (ASEAN) facilitates friendship and cooperation in the region of Southeast Asia. Other than promoting economic, social and cultural growth, member states are also bound by the ASEAN Charter to uphold peace and security in the region.

## Search Tips



### • Keywords and Search Phrases

To be able to find relevant sources, it is important to search using the right keywords.

- **'Juvenile Literature'**

- Did you know that the term **'juvenile literature'** can help narrow your search to find the books that are relevant to a primary to secondary school student's level?

- You can add in this phrase when searching through any of search database by the National Library Board (NLB)

- > **NLB Online Public Access Catalogue (OPAC):** <http://catalogue.nlb.gov.sg>

- > **NLB SearchPlus:** <http://nlbsearchplus.nlb.gov.sg/>

- Log on to either of these databases, and try typing in the following search terms:

- i. 'Southeast Asia'

- ii. 'Southeast Asia Juvenile Literature'

Search (ii) will narrow down your search results considerably to sources that are relevant to students!

### • Specific Search Commands

Information is available in a variety of formats. If you are searching on people and places in Southeast Asia, sources such as **images, photographs, and videos** may help you understand your topic in addition to text. You should be as specific as possible in your search command.

Try searching for these on any **search engines**.

As an example, if you are given the task of searching for people of Southeast Asia, such as the Dayak Tribe, you can find images and videos by adding in the specific source types. Instead of using 'Dayak Tribe', try the following search phrases:

- 'Dayak Tribe Headdress Images'
- 'Dayak Tribe Videos'

If you are looking for places in Southeast Asia, be clear on which landscape you are searching for. An example will be the river Tonle Sap, in Cambodia. You can consider using the following search phrases:

- 'Tonle Sap Juvenile Literature'
- 'Tonle Sap images'

These will help narrow your search and ensure that you find relevant sources quickly and easily!

#### References

Phillips, D.A (2006) Southeast Asia. Philadelphia: Chelsea House Publishers

Wilds, M.(2003) Southeast Asia. San Diego: Lucent Books

'Geography for Kids: Southeast Asia'. (2014) *Ducksters*. Technological Solutions, Inc. (TSI), Retrieved from: <http://www.ducksters.com/geography/southeastasia.php>

'Southeast Asia'. (2014). In *Encyclopædia Britannica*. Retrieved from: <http://library.ebonline.com.libproxy.nlb.gov.sg/levels/adults/article/111139>

'Asia'. (2014). In *Encyclopædia Britannica*. Retrieved from: <http://library.ebonline.com.libproxy.nlb.gov.sg/levels/teens/article/272975>

'Charter of the Association of Southeast Asian Nations'. (2014) *ASEAN Secretariat*. Retrieved from: <http://www.asean.org/asean/asean-charter/asean-charter>